



MALLA REDDY COLLEGE OF ENGINEERING & TECHNOLOGY

(Autonomous Institution – UGC, Govt. of India)

(Affiliated to JNTU, Hyderabad, Approved by AICTE - Accredited by NBA & NAAC – 'A' Grade - ISO 9001:2015 Certified)
Maisammaguda, Dhulapally, Komapally, Secunderabad – 500100, Telangana State, India.

7.1.5. GREEN **CAMPUS INITIATIVES**



MALLA REDDY COLLEGE OF ENGINEERING & TECHNOLOGY

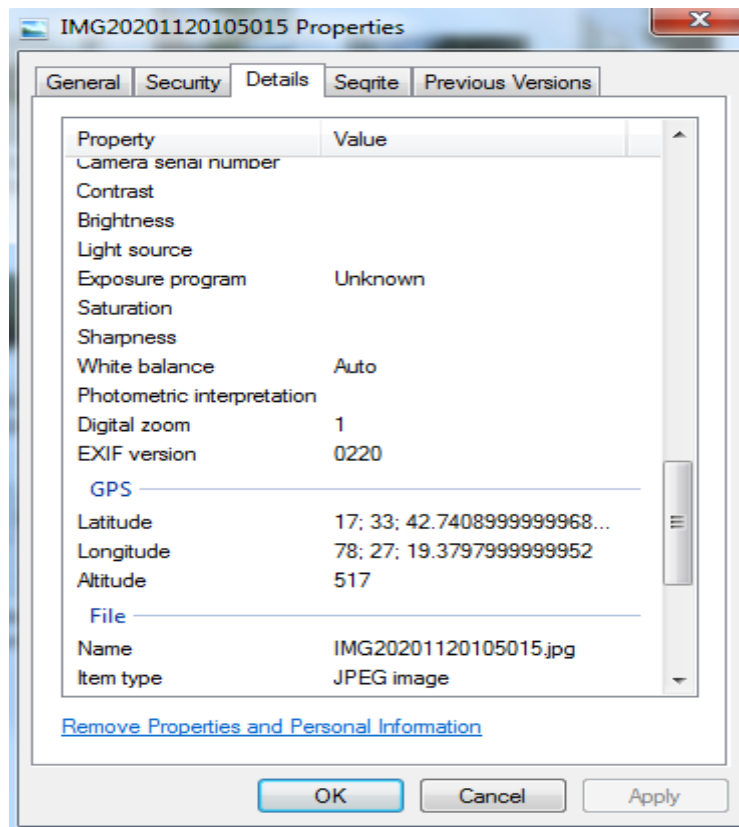
(Autonomous Institution – UGC, Govt. of India)

(Affiliated to JNTU, Hyderabad, Approved by AICTE - Accredited by NBA & NAAC – 'A' Grade - ISO 9001:2015 Certified)
Maisammaguda, Dhulapally, Komapally, Secunderabad – 500100, Telangana State, India.

S.NO	PARTICULARS
1	Restricted Entry of Automobiles
2	Use of Bicycles/Battery Powered Vehicles
3	Pedestrian Friendly Pathways
4	Ban of Use of Plastic
5	Landscaping with Trees and Plants

1. RESTRICTED ENTRY OF AUTOMOBILES

As a part of Green campus initiatives, the Institute has taken so many measures out of which the first and foremost is Restricting the entry of Automobiles(Outside Vehicles) into the campus as an initiative for Green Campus. The related Geotagged photos are shown below:





IMG20201120104716 Properties

General Security Details **Exif** Previous Versions

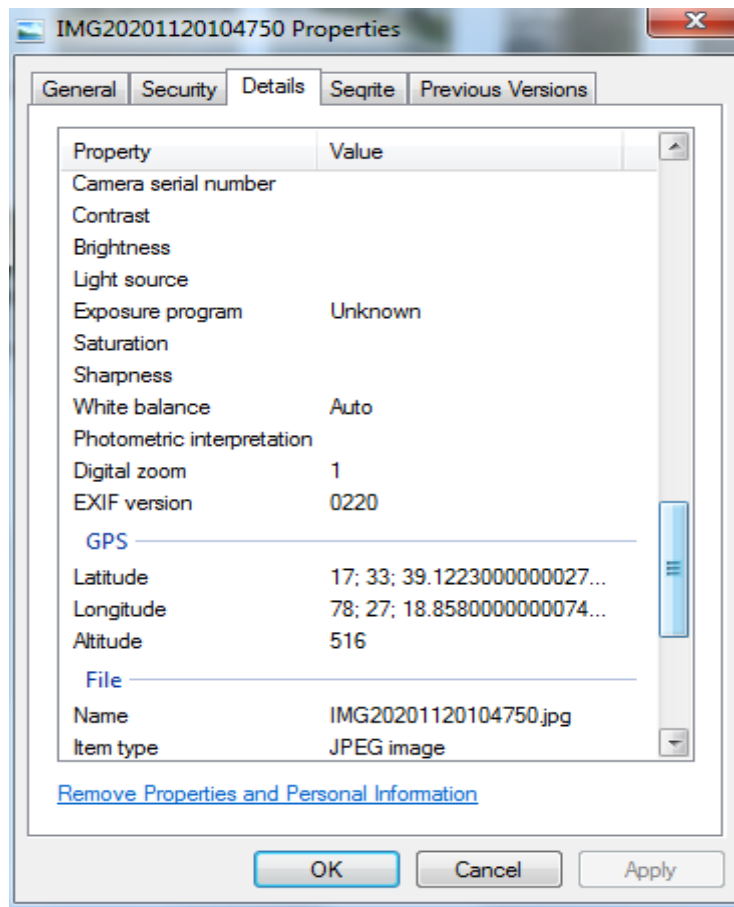
Property	Value
Contrast	
Brightness	
Light source	
Exposure program	Unknown
Saturation	
Sharpness	
White balance	Auto
Photometric interpretation	
Digital zoom	1
EXIF version	0220
GPS	
Latitude	17; 33; 38.8957000000010...
Longitude	78; 27; 19.6545000000042...
Altitude	516
File	
Name	IMG20201120104716.jpg
Item type	JPEG image
Folder path	C:\Users\MRCET\Desktop

[Remove Properties and Personal Information](#)

OK Cancel Apply

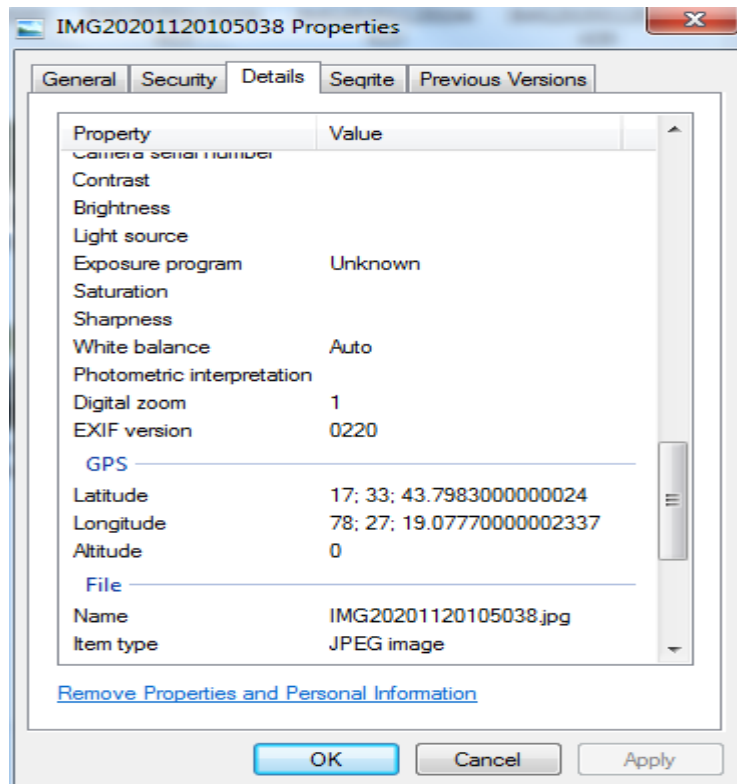
2.USE OF BICYCLES/BATTERY POWERED VEHICLES

As a part of Green campus initiatives, the Institute has taken so many measures out of which the Usage of Bicycles and Battery powered vehicles as an initiative for Green Campus. The related Geotagged photos are shown below:



3. PEDESTRIAN FRIENDLY PATHWAYS

As a part of Green campus initiatives, the Institute has taken so many measures out of which providing Pedestrian Friendly Pathways in the the campus is also an initiative for Green Campus. The related Geotagged photos are shown below:





IMG20201120104750 Properties

General Security Details **Exif** Previous Versions

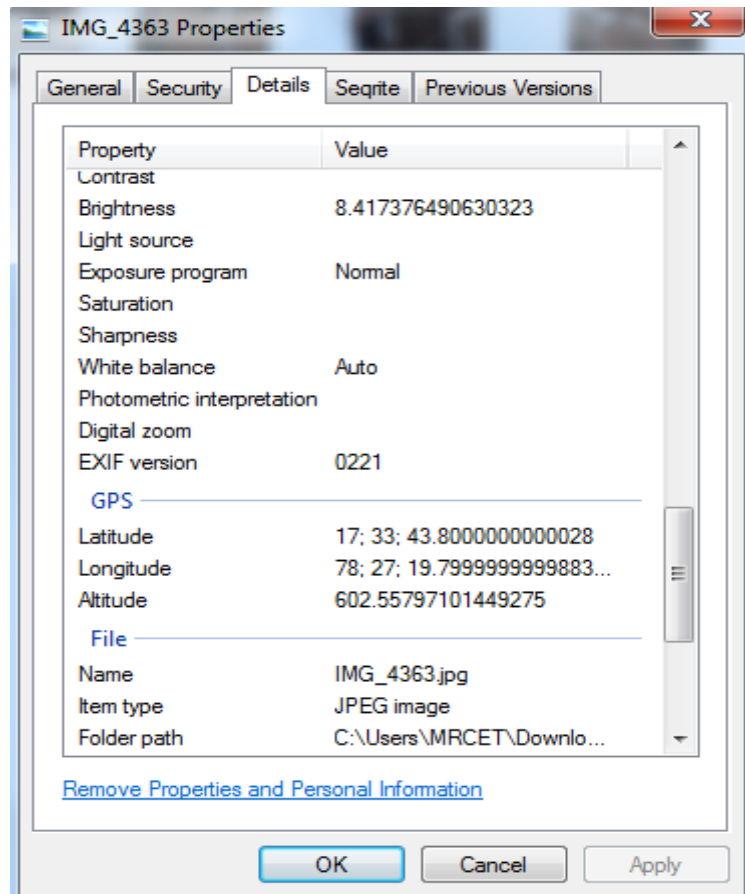
Property	Value
Flash model	
Camera serial number	
Contrast	
Brightness	
Light source	
Exposure program	Unknown
Saturation	
Sharpness	
White balance	Auto
Photometric interpretation	
Digital zoom	1
EXIF version	0220
GPS	
Latitude	17; 33; 39.12230000000027...
Longitude	78; 27; 18.85800000000074...
Altitude	516
File	
Name	IMG20201120104750.jpg

[Remove Properties and Personal Information](#)

OK Cancel Apply

4. WORKSHOPS/RALLY TO BAN ON USE OF PLASTIC

As a part of Green campus initiatives, the Institute has taken so many measures out of which Workshops/Rallies are organized to ban the use of plastic in the campus as an initiative for Green Campus. The related Geotagged photos are shown below:





IMG20201120105015 Properties

General Security Details **Exif** Previous Versions

Property	Value
Contrast	
Brightness	
Light source	
Exposure program	Unknown
Saturation	
Sharpness	
White balance	Auto
Photometric interpretation	
Digital zoom	1
EXIF version	0220
GPS	
Latitude	17; 33; 42.74089999999968...
Longitude	78; 27; 19.37979999999952
Altitude	517
File	
Name	IMG20201120105015.jpg
Item type	JPEG image
Folder path	C:\Users\MBCE\Downloads

[Remove Properties and Personal Information](#)

OK Cancel Apply



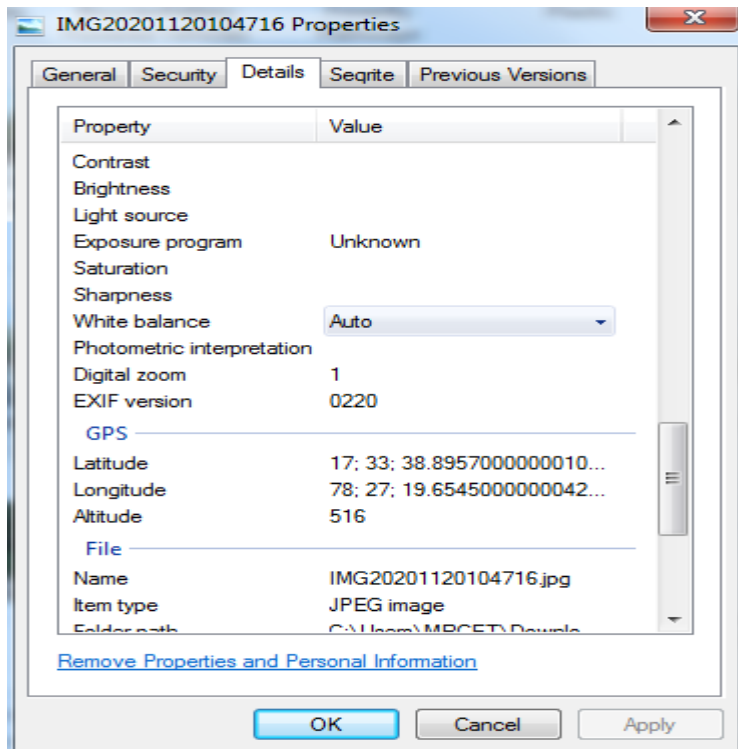
IMG20201120105015 Properties

General Security Details **Exif** Previous Versions

Property	Value
Contrast	
Brightness	
Light source	
Exposure program	Unknown
Saturation	
Sharpness	
White balance	Auto
Photometric interpretation	
Digital zoom	1
EXIF version	0220
GPS	
Latitude	17; 33; 42.74089999999968...
Longitude	78; 27; 19.37979999999952
Altitude	517
File	
Name	IMG20201120105015.jpg
Item type	JPEG image
Folder path	C:\Users\MPCEET\Desktop

[Remove Properties and Personal Information](#)

OK Cancel Apply





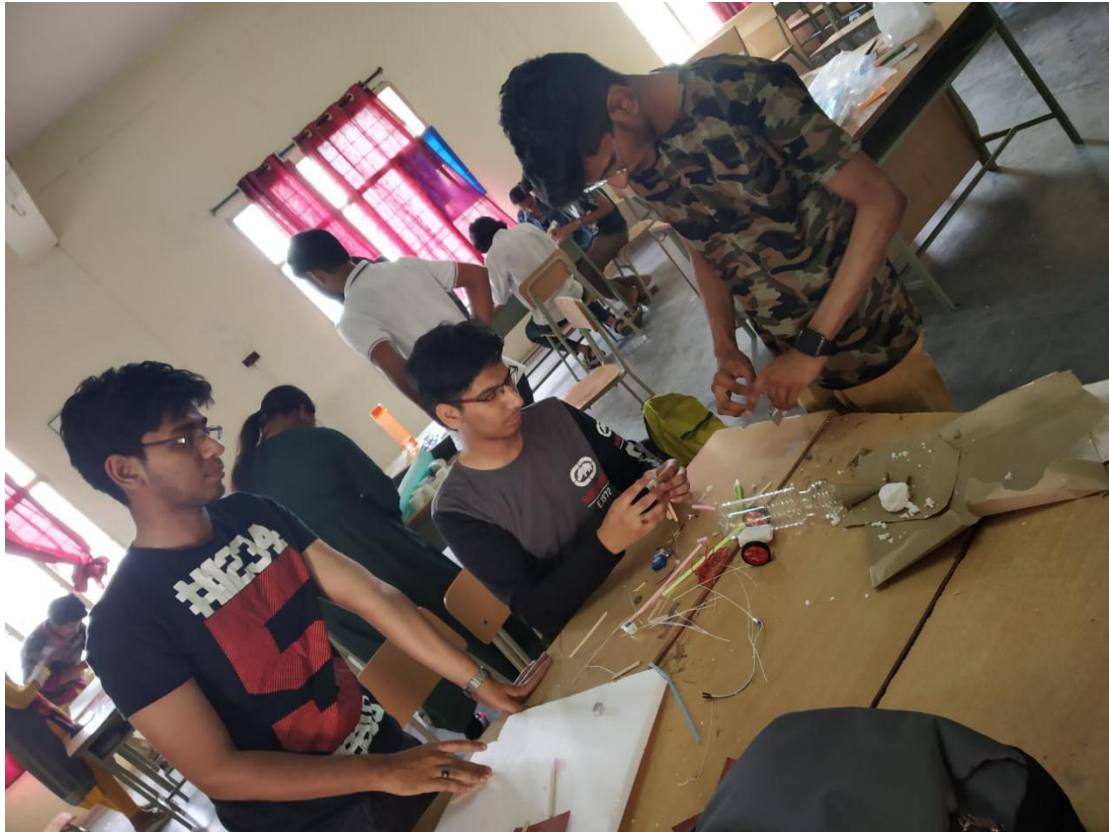
IMG20201120100728 Properties

General Security Details **Exif** Previous Versions

Property	Value
Contrast	
Brightness	
Light source	
Exposure program	Unknown
Saturation	
Sharpness	
White balance	Auto
Photometric interpretation	
Digital zoom	1
EXIF version	0220
GPS	
Latitude	17; 33; 38.06480000000000...
Longitude	78; 27; 18.775599999999356
Altitude	516
File	
Name	IMG20201120100728.jpg
Item type	JPEG image
Folder path	C:\Users\MRCET\Downlo...

[Remove Properties and Personal Information](#)

OK Cancel Apply



IMG20201120101700 Properties

General Security Details **Exif** Previous Versions

Property	Value
Camera serial number	
Contrast	
Brightness	
Light source	
Exposure program	Unknown
Saturation	
Sharpness	
White balance	Auto
Photometric interpretation	
Digital zoom	1
EXIF version	0220
GPS	
Latitude	17; 33; 38.7240000000018...
Longitude	78; 27; 20.39610000000126...
Altitude	516
File	
Name	IMG20201120101700.jpg
Item type	JPEG image

[Remove Properties and Personal Information](#)

OK Cancel Apply



IMG20201120101700 Properties

General Security Details **Exif** Previous Versions

Property	Value
Camera serial number	
Contrast	
Brightness	
Light source	
Exposure program	Unknown
Saturation	
Sharpness	
White balance	Auto
Photometric interpretation	
Digital zoom	1
EXIF version	0220
GPS	
Latitude	17; 33; 38.7240000000018...
Longitude	78; 27; 20.3961000000126...
Altitude	516
File	
Name	IMG20201120101700.jpg
Item type	JPEG image

[Remove Properties and Personal Information](#)

OK Cancel Apply



IMG20201120105323 Properties

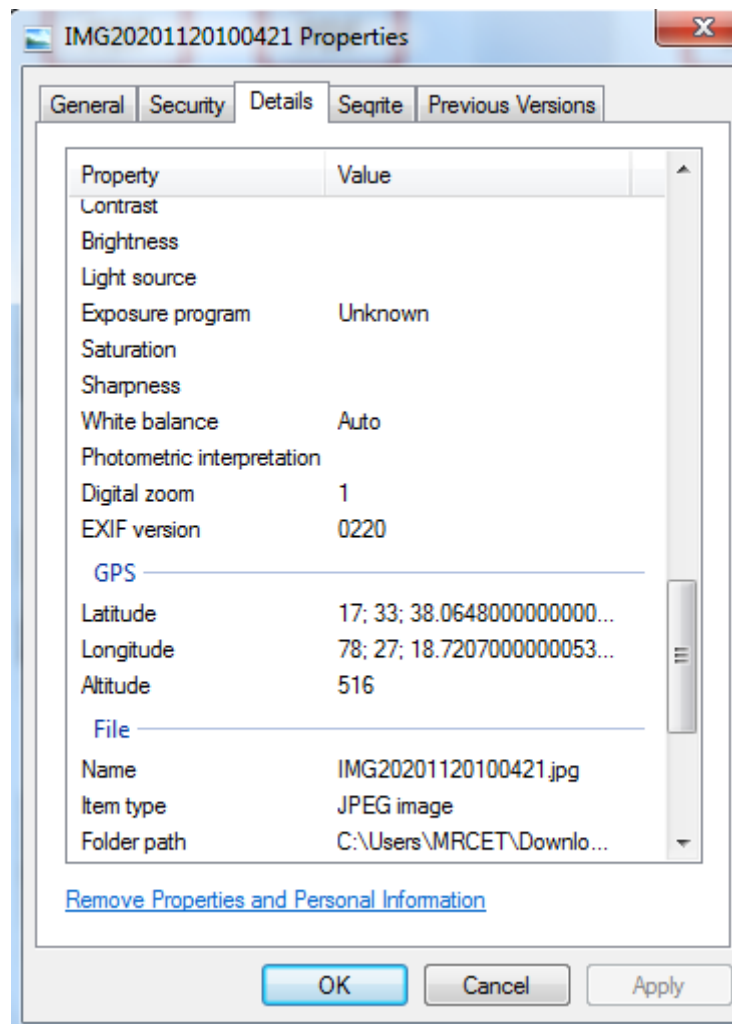
General Security Details **Exif** Previous Versions

Property	Value
Camera serial number	
Contrast	
Brightness	
Light source	
Exposure program	Unknown
Saturation	
Sharpness	
White balance	Auto
Photometric interpretation	
Digital zoom	1
EXIF version	0220
GPS	
Latitude	17; 33; 43.4207000000024...
Longitude	78; 27; 18.94040000000212...
Altitude	515
File	
Name	IMG20201120105323.jpg
Item type	JPEG image

[Remove Properties and Personal Information](#)

OK Cancel Apply

LANDSCAPING WITH TREES AND PLANTS





MRCET
17.5624°N, 78.4556°E

IMG_4373 Properties

General Security Details **Exif** Previous Versions

Property	Value
Camera serial number	
Contrast	
Brightness	7.4860079954311818
Light source	
Exposure program	Normal
Saturation	
Sharpness	
White balance	Auto
Photometric interpretation	
Digital zoom	
EXIF version	0221
GPS	
Latitude	17; 33; 43.80000000000028
Longitude	78; 27; 20.40000000000232...
Altitude	574.98373983739839
File	
Name	IMG_4373.jpg
Item type	JPEG image

[Remove Properties and Personal Information](#)

OK Cancel Apply